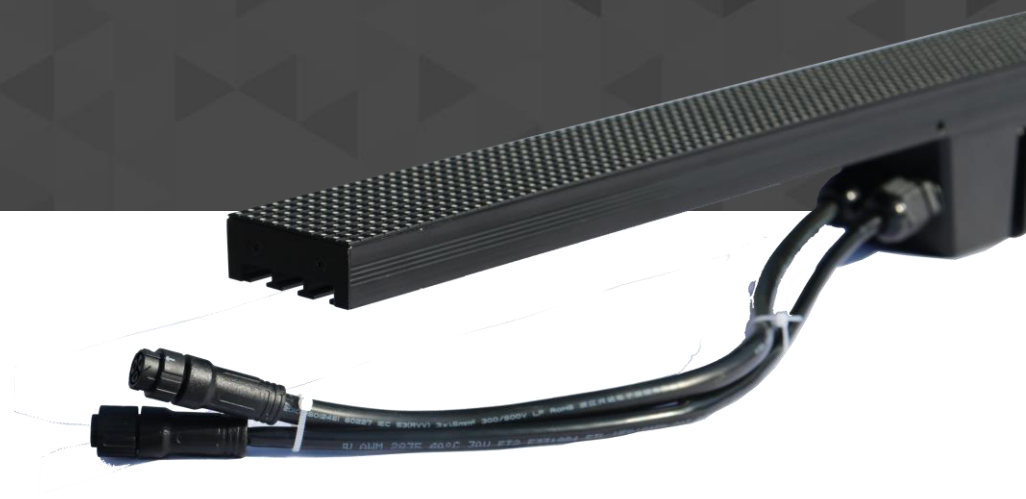


Video Bar Series





Multiformity



Creative Shape



High Brightness



Diversity

Without frame

Power and signal are integrating control

Die-casting aluminum control box, fast installation

Meet fixed installation and rental use,matching mechanical structure design,all kinds of splicing methods

Outdoor waterproof design :IP65

EMC circuit design

Two display control available:Novastar or Mooncell.

Features



Installation & Maintenance:

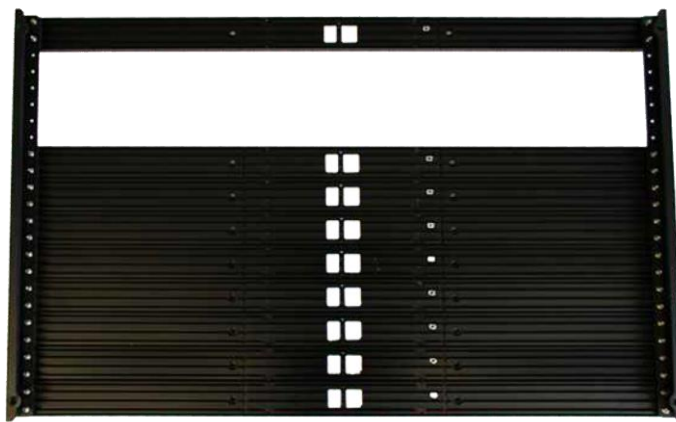


▲ Fixe Installation

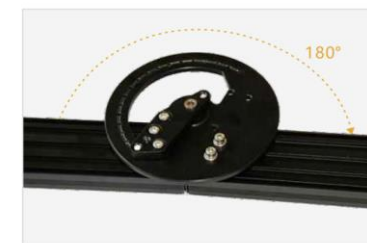
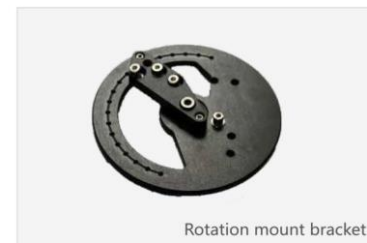


▲ Fast installation

FIXED & FAST INSTALLATION



MOUNT BRACKET



ROTATION MOUNT BRACKET

Specification

Pixel Pitch	5mm
LED Configuration	SMD1921
Pixel Density	40000
Module Size	480mm x 50mm
Module Pixel	96 x 10
Cabinet Size(WxHxD)	960mm x 50mm x 60mm
Cabinet Pixel	192 x 10
Cabinet Weight	1.8kg
Cabinet Material	Aluminum Alloy
IP rating	IP65 / IP54
Signal Connection	3/8 P Connector
Input voltage	AC100~240V 50/60 HZ
Horizontal Viewing	140 deg
Vertical viewing	140 deg
Power consumption (Avg)	15W/PCS
Power consumption (Max)	35W/PCS

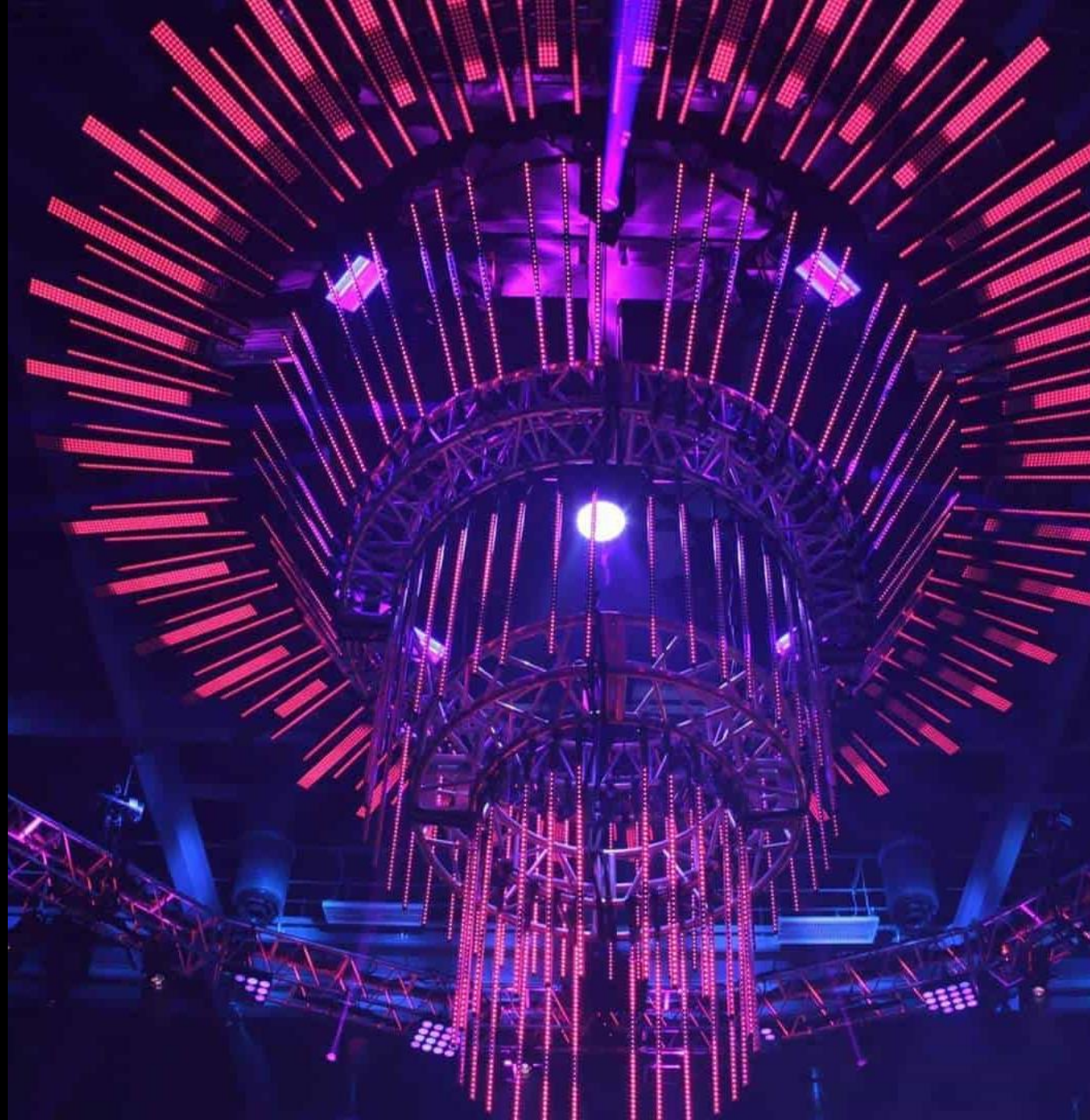
Gray Scale	14 bit
Frame Rate	50 / 60 Hz
Refresh Rate	1920 Hz
Color Temperature	3000 -10000 adjustable
Driving Mode	Constant Current, 1/10
White Brightness	5000 nits
Brightness Uniformity	97%
Contrast Ratio	5000:1
Color Calibration	YES
Brightness Calibration	YES
Pixel Center Offset	≤ 3%
Operating Temperature	-20°C~40°C
Storage Temperature	-30°C~60°C
Operating Humidity	10%~80%
Storage Humidity	10%~85%
Lifepan	100,000 hours

Project Gallery

Projects has been done with indoor series from 2019 – 2021

Locations: Middle East, Asia, Europe etc.









think
Argentina

né la inteligencia
acción

IBM

IBM

think

#ThinkArgentina



DOIT VISION Service

Customer' value is our top priority



Free inquiry with solutions

We will quote for any inquiry within 24 hours with quotations & specifications



Free drawing

Free drawing of structure, signal & power cable connection, customized solutions if needed



7/24 online technical support

Sales technical supports are ready anytime within warranty

Contacts



Address.

10 Aigeos Street, 1st Floor, Office Suite 1
Nicosia 1035, Cyprus



Tel.

Tel: +357 22 030 030
Fax: +357 22 030 031



Email.

E: info@intelligentsignage.cy