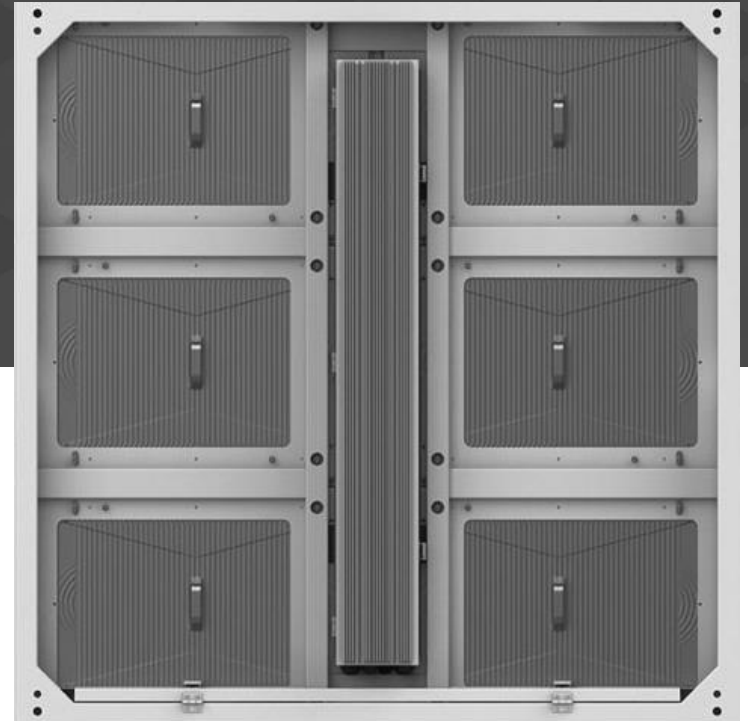


VAST Series

IP66 Outdoor LED wall

Specially design for extreme conditions for outdoor applications





A high protection solution

for outdoor extreme conditions



Reliability

IP66 high IP Rating to fit outdoor extreme conditions



User-Friendly

Easy front and back maintenance design, less labor & maintenance cost



Bright

Up to 10,000 nits brightness, 3000:1 high contrast ratio, visible under sunshine



ECO

Energy-saving electronic design

1. Reliability
2. User-friendly
3. Eco-design
4. Creative design
5. Specification
6. Applications



V A S T series

Numbers



10000 nits

×

Brightness

Brightness from 7000 -10,000 nits
Depend on the LED lamp chosen



IP66

×

IP Rating

High protection level, weather-proof
Higher than the traditional IP65



3 years

×

Warranty

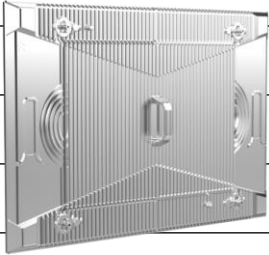
Thanks to the high protection design,
all Vast series are giving 3 years warranty

Reliability

Strong Flame Resistance:

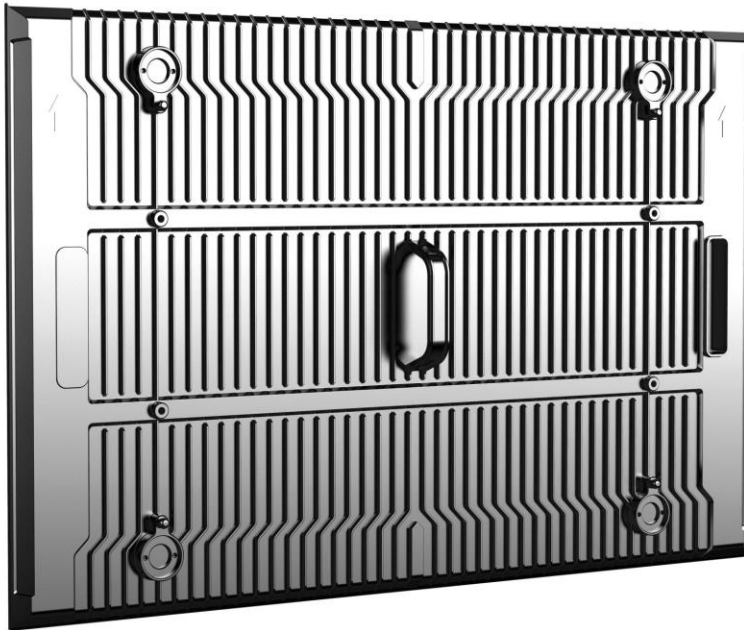
Aluminum material, high temperature durability, fast heat-dissipation.

The whole product can Reach **5VB** fireproofing level.

Flame Retardant Grade		After 10 seconds burn tests on the sample	How many seconds will the flame be extinguished?	Can the drop particles ignite cotton?
5VB		5 times	60 seconds	Yes
V-0		2 times	30 seconds	No
V-1		2 times	60 seconds	No
V-2		2 times	60 seconds	No

HB

For samples 3-13 mm thickness, the combustion rate \leq 40mm / min; Samples \leq 3mm thickness, burning speed \leq 70mm / min



IP66 IP Rating

Full sealed die-casting aluminum module chassis

Water proof connectors(between modules)

Drain hole is designed at the bottom of the panel to prevent ponding

High standard of Waterproofing

Can be immersed in the specified water pressure for a long time



User-Friendly

Smart mechanical design, easy for front & back maintenance, super light weigh(24kg) aluminum cabinet



Smart Mechanical Design



Cable-less design

Power and data cables are hidden at the bottom of the panel



Hard Connection

BTB connector replace data and power cables, high stability.



Multiple size

Available: 960*1280/960*960/960*640/1440*1280/1440*960mm



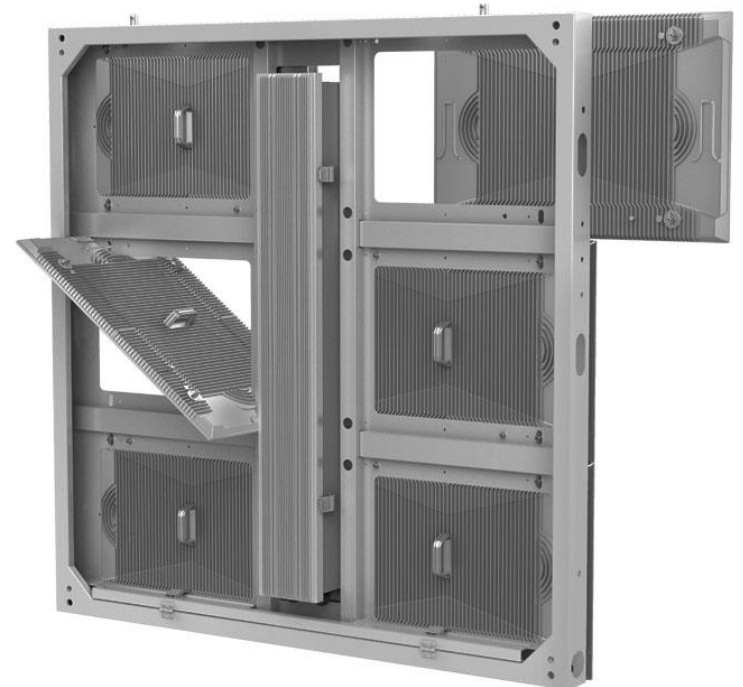
Customized design

Curve shape & 90 degree edge available



Noise Free

No fans needed for the working



Light weight

24kg / aluminum cabinet
35kg / Iron cabinet

Thickness:75mm



Cables less

Connection cables all hiding
in a smart way



ECO

Common cathode energy-saving electronic design



Power consumption calculation

Power Saving

Vast P10
7000 nits

Normal P10
6000 nits

Time / Screen Size	Average 150W / SQM	Average 300W / SQM
1 DAY * 100 SQM		360(KW.h)
1 YEAR * 100 SQM		100,000(KW.h)
3 YEARS * 100 SQM		300,000(KW.h)
5 YEARS * 100 SQM		500,000(KW.h)



Cabinet Frame

LED MODULE

Ventilation System

Heat dissipation gap

between the module and the cabinet,

better heat dissipation

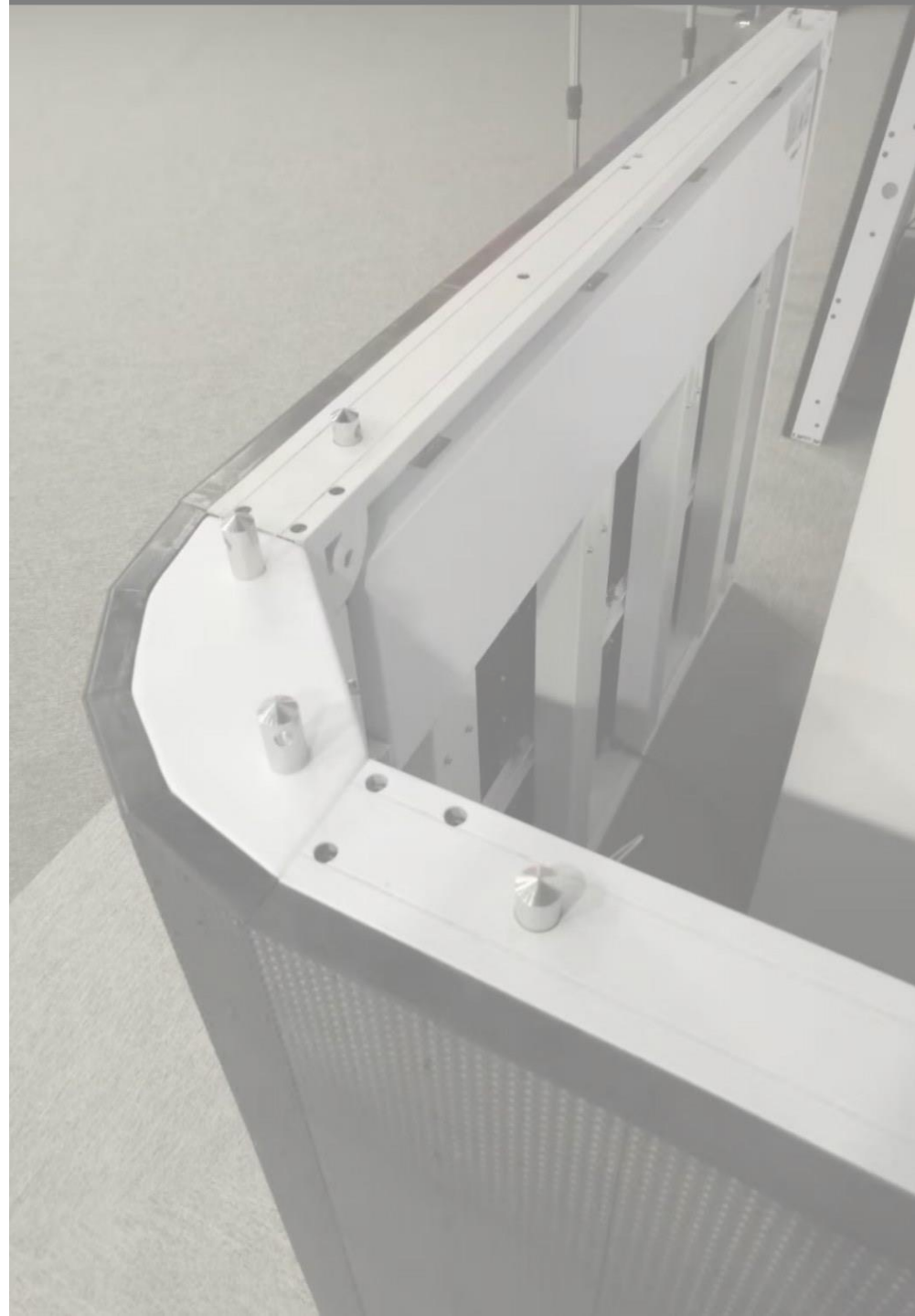
Natural cooling system

0.43sqm for each module

0.24sqm for each power supply box

Creative solution

Curve shape



V

Creative solution

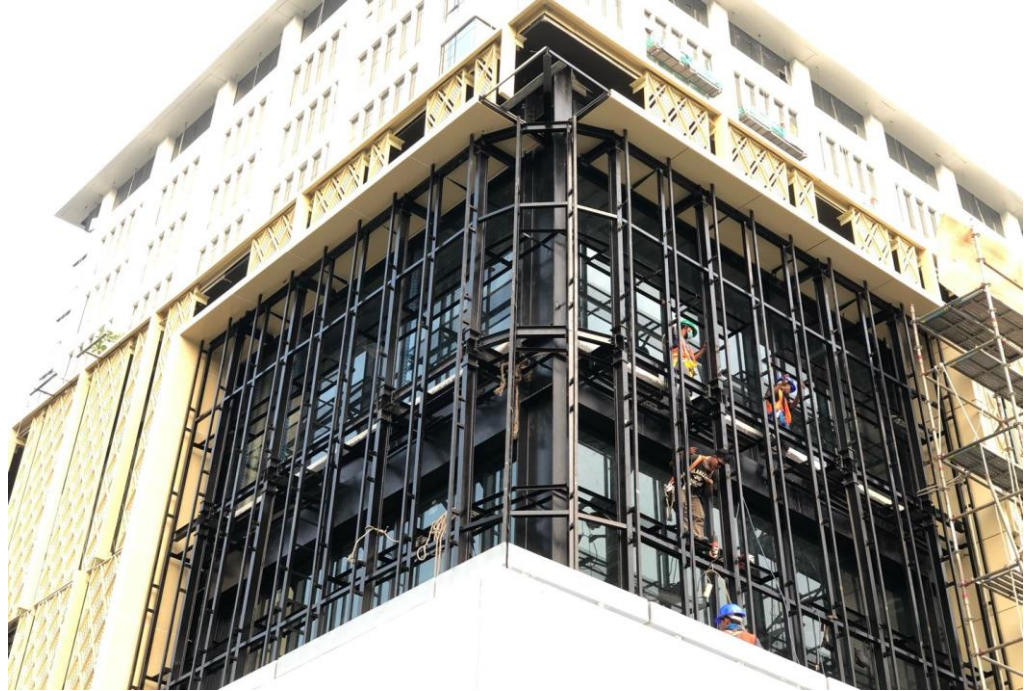
90 degree / Right angle





3D LED billboard

Curve shape | Outdoor





Specification

VAST Series

6.67mm | 8mm | 10mm

Specification

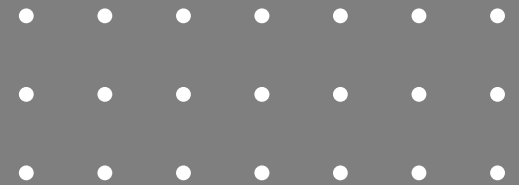
Pixel pitch	6.67mm	8mm	10mm
SMD Array	SMD2727	SMD3535	SMD3535
Brightness	7000-10000 nits		
Viewing angle	160 / 140		
Refresh rate	3840Hz		
Input voltage	110 – 240V, 50/60Hz		
Power consumption	200W(Average) / 550W(Max)		
Grayscale	14 bits		
LED module resolution	72 x 48	60 x 40	48 x 32
LED module size	480mm x 320mm		
Cabinet size	960mm x 960mm x 75mm / 1280mm x 960mm x 75mm (W x H x D)		
Cabinet weight	24 kg / square meter		
Maintenance	Front & back service		
Operating temperature	-20 – 60 degrees		
IP Rating	IP66		
Lifespan	>100,000 hrs		



Project Gallery

Projects has been done with VAST Series from 2019 – 2021

Locations: Middle East, North America, Asia, Europe etc.





Outdoor LED billboard

Outdoor LED billboard for advertising



Outdoor Giant LED wall

Wall mounted outdoor LED wall with right angle





Modular design



High brightness



IP66 water-proof

V



Big viewing angle

160/140



3840Hz high refresh rate



12 bits grayscale



High Brightness

7000-10000 nits high brightness



Front service

All LED modules & power supplies, full front maintenance



IP66

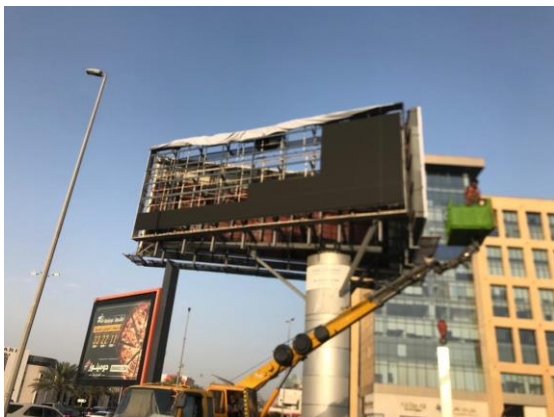
Outdoor high protection, IP66, water-proof



Noise Free

No fans & aircon system for the operation, noise free solution





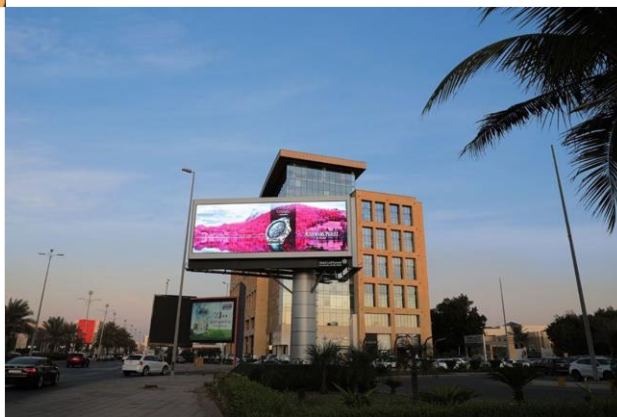
Multiple installation

Roof top installation, wall mounted installation,
pillar installations are all available



Energy-saving

With common cathode technology saving 30% +
power consumption





Wall mounted



Outdoor LED Sign



Roof Top



Creative installation



DOIT VISION Service

Customer' value is our top priority



Free inquiry with solutions

We will quote for any inquiry within 24 hours with quotations & specifications



Free drawing

Free drawing of structure, signal & power cable connection, customized solutions if needed



7/24 online technical support

Sales technical supports are ready anytime within warranty

Contacts



Address.

10 Aigeos Street, 1st Floor, Office Suite 1
Nicosia 1035, Cyprus



Tel.

Tel: +357 22 030 030
Fax: +357 22 030 031



Email.

info@intelligentsignage.cy