

Square Series

Outdoor LED wall

Specially design for extreme conditions for outdoor applications



Reliable weather-proof

for outdoor extreme conditions



Reliability

IP65 front & back fit outdoor
extreme conditions



User-Friendly

Easy front and back
maintenance design, less
labor & maintenance cost



Bright

Up to 10,000 nits' brightness,
3000:1 high contrast ratio,
visible under sunshine



ECO

Energy-saving electronic
design

Cabinet size: 1 x 1m, 3.28ft x 3.28ft

one cabinet - one square meter



Numbers



Up to 10000 nits

×

Brightness

Brightness from 7000 -10,000 nits
Depend on the LED lamp chosen



IP65

×

IP Rating

High protection level, weather-proof
Higher than the traditional IP65



3 years

×

Warranty

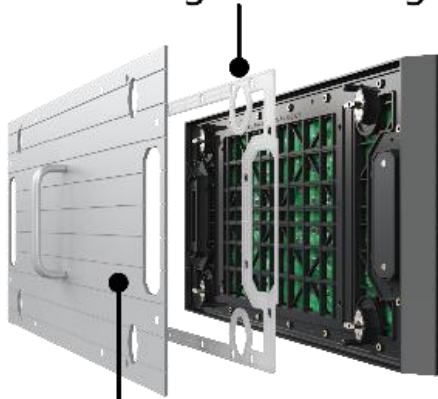
Thanks to the high protection design,
all Vast series are giving 3 years warranty

Specification

Pixel pitch	3.9mm	4.8mm	6.25mm	7.8mm	10.4mm
LED configuration	SMD1921	SMD1921	SMD2727	SMD2727	SMD2727
Brightness	5000 nits	5000 nits	6500 nits	6500 nits	6500nits
Viewing angle	120°/ 120° (50% brightness)				
Contrast ratio	5000: 1				
Refresh rate	1920/3840Hz				
Processing	16 bits				
Module size(mm)	500mm x 250mm				
Cabinet size(mm)	1000 x 1000mm / 500 x 1000 mm				
Input voltage	AC100~240V 50/60 HZ				
Power consumption (Avg)	265W/sqm	265W/sqm	240W/sqm	220W/sq	220W/sqm
Power consumption (Max)	800W/sqm	800W/sqm	720W/sqm	650W/sqm	650W/sqm
Working temperature	-20°C~60°C				
IP rating	IP65/IP65				
Life span	100,000 hrs				
Warranty	36 months				



sealing rubber ring



Aluminum alloy cooling back plate

LED Module

Dual power supply and pin interface design
hidden optional

Land right modules interchangeable use

45° angle design to form 90 degree right
angle shape

Aluminum back shell and aluminum power
box for heat dissipation, which has high thermal conductivity and
good heat dissipation,

ensuring long-term stable operation of the screen.

Modular mechanical design

LED Module | Cabinet frame | Control power box

Easy Installation & Maintenance





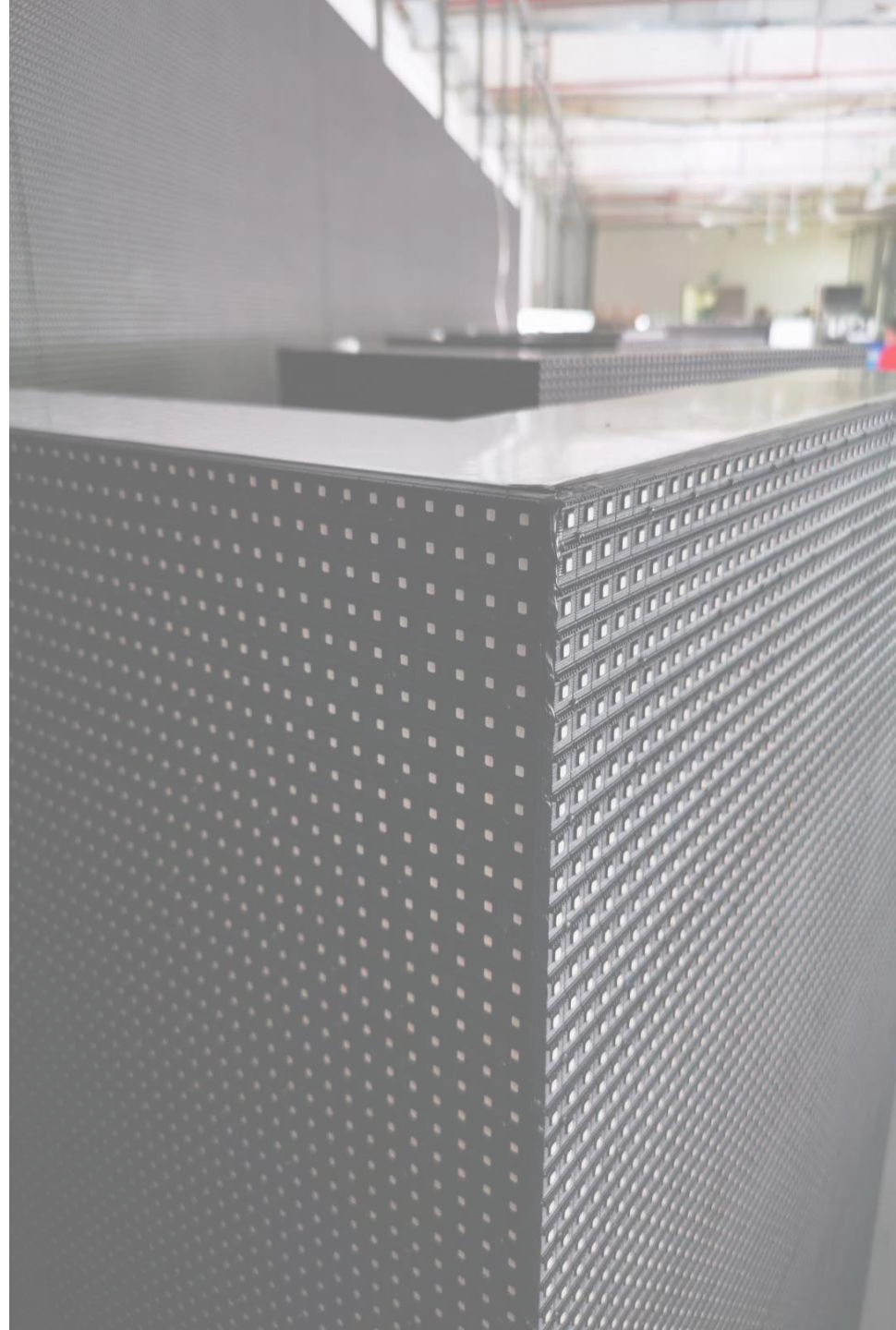
ECO

Common cathode energy-saving electronic design



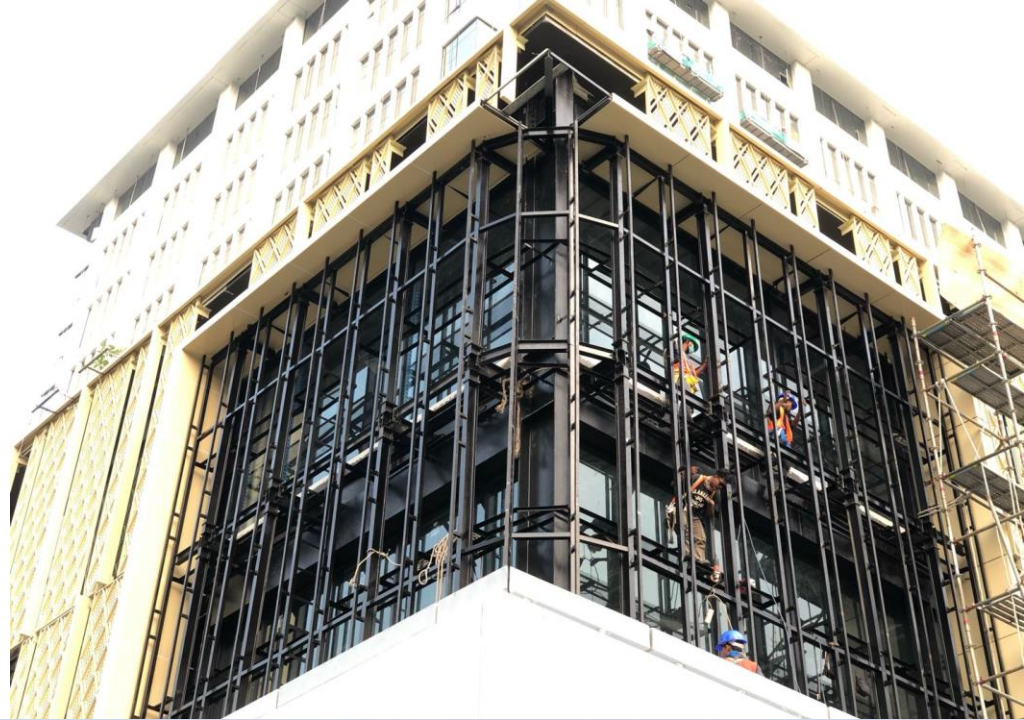
Creative solution

90 degree right angle



3D LED billboard

Curve shape | Outdoor

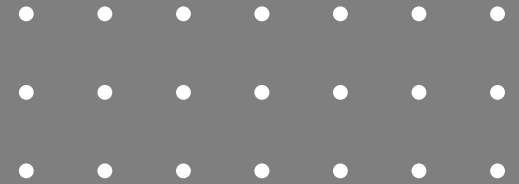




Project Gallery

Projects has been done with VAST Series from 2019 – 2021

Locations: Middle East, North America, Asia, Europe etc.





Outdoor LED billboard

Outdoor LED billboard for advertising



Outdoor Giant LED wall

Wall mounted outdoor LED wall with right angle





Modular design



High brightness



IP66 water-proof

S



Big viewing angle

160/140



3840Hz high refresh rate



12 bits grayscale



High Brightness

7000-10000 nits' high brightness



Front service

All LED modules & power supplies, full front maintenance



IP66

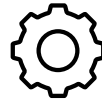
Outdoor high protection, IP66, water-proof



Noise Free

No fans & aircon system for the operation, noise free solution





Multiple installation

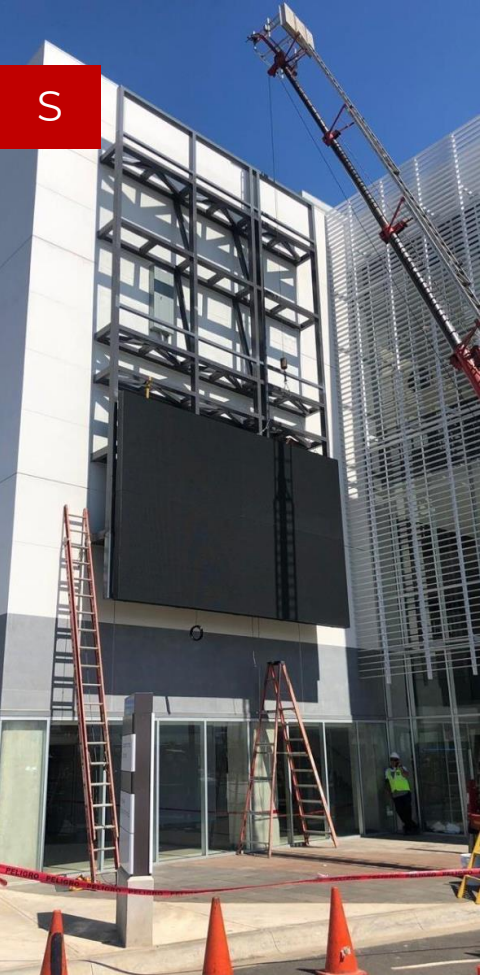
Roof top installation, wall mounted installation,
pillar installations are all available



Energy-saving

With common cathode technology saving 30% +
power consumption





Wall mounted



Outdoor LED Sign



Roof Top



Creative installation



DOIT VISION Service

Customer' value is our top priority



Free inquiry with solutions

We will quote for any inquiry within 24 hours with quotations & specifications



Free drawing

Free drawing of structure, signal & power cable connection, customized solutions if needed



7/24 online technical support

Sales technical supports are ready anytime within warranty

Contacts



Address.

10 Aigeos Street, 1st Floor, Office Suite 1
Nicosia 1035, Cyprus



Tel.

Tel: +357 22 030 030
Fax: +357 22 030 031



Email.

info@intelligentsignage.cy