

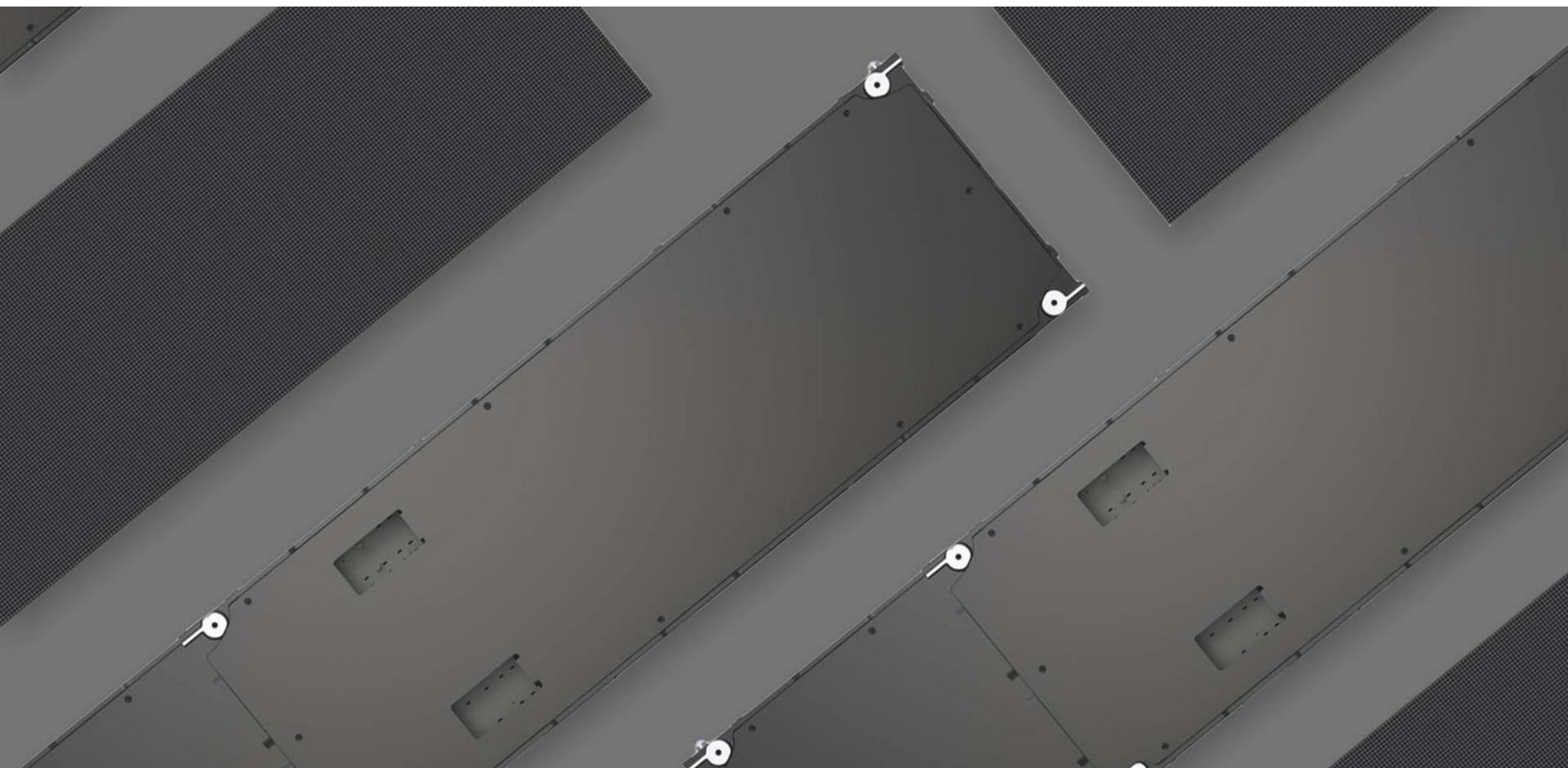
Blocks Series

Pixel pitch 2.6mm/P2.9mm/P3.9mm

B

Innovative Ultra-thin indoor LED display

For commercial use

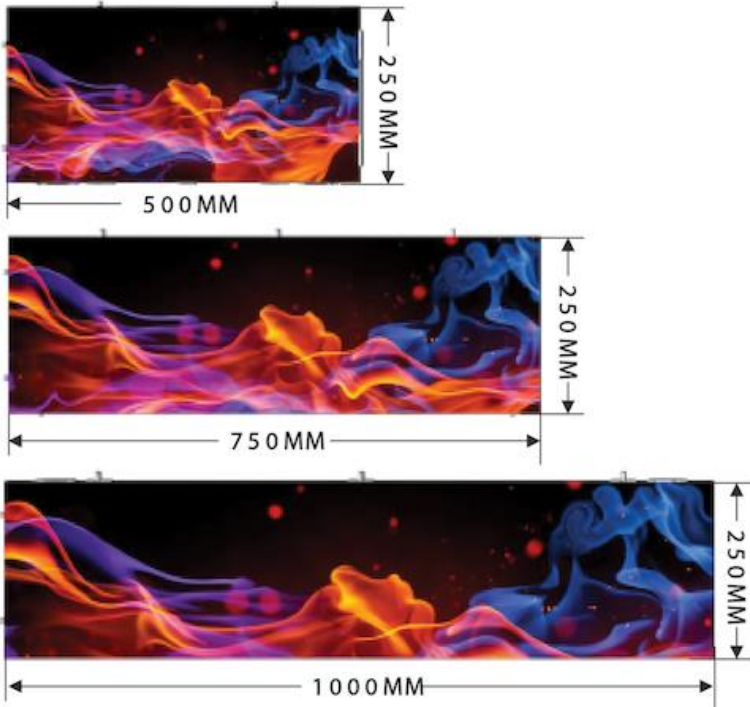


Product features

- ✓ Customized size, 250X750mm & 500x250mm, 250X1000mm optional.
- ✓ Single Side/Double Side optional.
- ✓ Pixel pitch: P2.6mm/P2.976mm/P3.91mm optional
- ✓ No Plastic Housing for LED modules design
- ✓ Ultra-thin Design, 52mm for single side 55mm for double side
- ✓ 100% magnetic front maintenance
- ✓ Superb precise alignment with CNC-finished edges



Flexible panel sizes fit any installation size

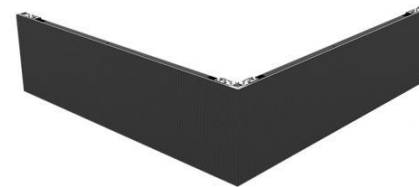


Specification

Pixel pitch	2.6mm	2.9mm	3.9mm
LED configuration	SMD1515	SMD1515	SMD2020
Brightness	1000 nits	1000 nits	1200 nits
Viewing angle	160°/ 160° (50% brightness)		
Scan mode	1/24	1/28	1/16
Refresh rate	1920/3840Hz		
Processing	14 bits		
Module size	250mm x 250mm x 17mm (W x H x D)		
Panel size	250mm x 500mm / 250mm x 750mm / 250mm x 1000mm x (78mm) (W x H x D)		
Panel weight	9kg (SINGLE SIDE)/ 11KG(DOUBEL SIDE)		
Input voltage	AC100~240V 50/60 HZ		
Power consumption (Avg)	200W/sqm	200W/sqm	200W/sqm
Power consumption (Max)	640W/sqm	640W/sqm	680W/sqm
Working temperature	-20°C~60°C		
IP rating	IP31/IP31		
Life span	100,000 hrs.		
Warranty	24 months		

B

90-degree, right angle
seamless installation



B

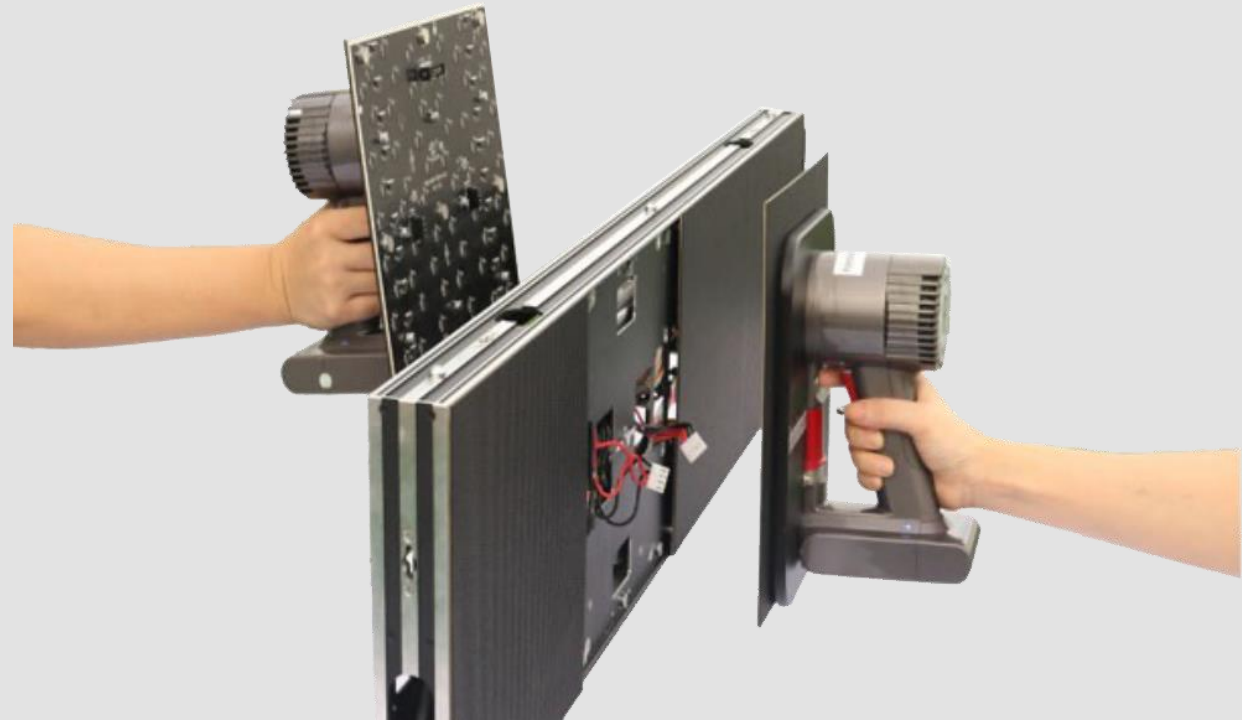


Right Corner Installation

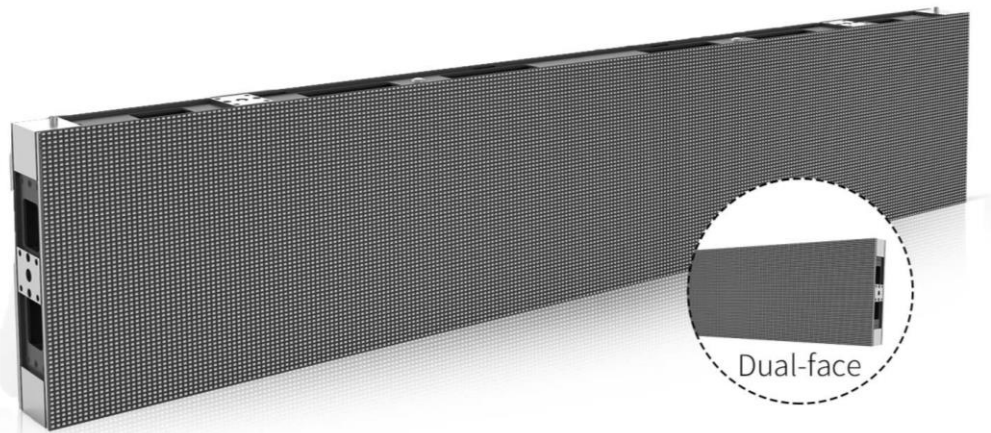
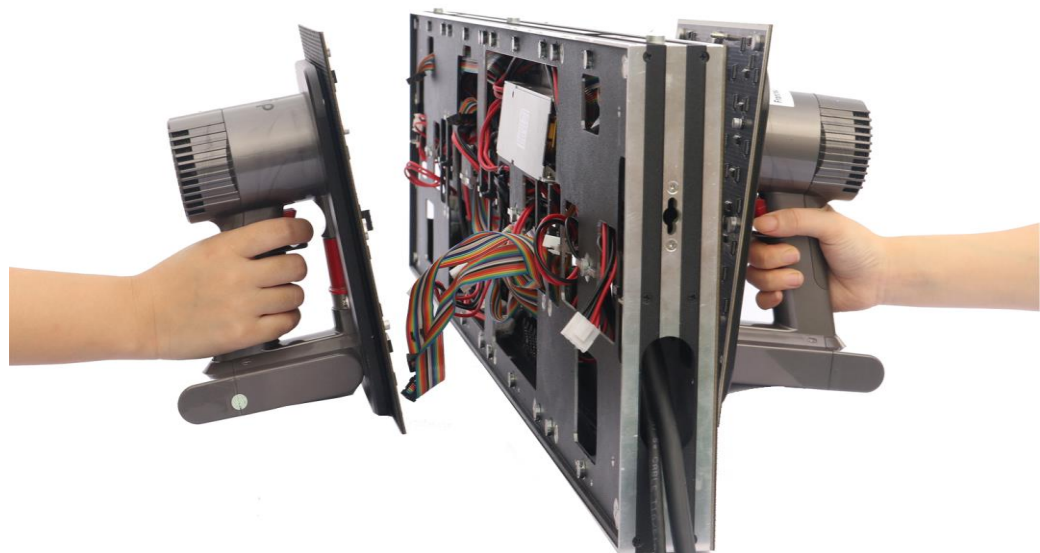
B



100% full front service
By magnetic



Double Side Design



B



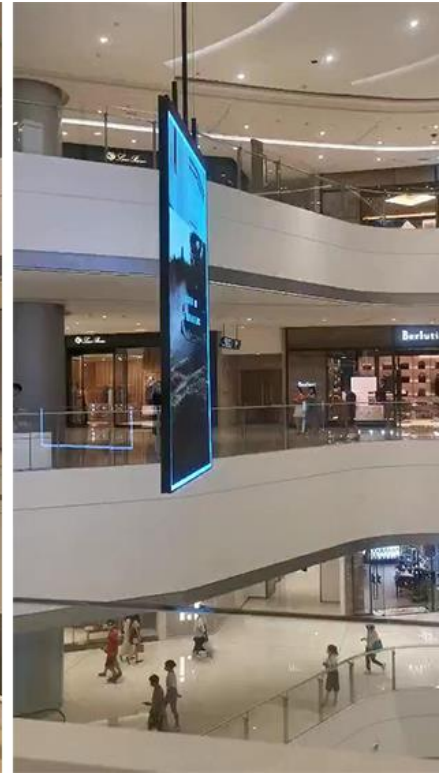
Hanging installation

Wall mounted installation





Cinema



Shopping mall



Retail LED screen for advertising

DOIT VISION Service

Customer' value is our top priority



Free inquiry with solutions

We will quote for any inquiry within 24 hours with quotations & specifications



Free drawing

Free drawing of structure, signal & power cable connection, customized solutions if needed



7/24 online technical support

Sales technical supports are ready anytime within warranty

Contacts



Address.

10 Aigeos Street, 1st Floor, Office Suite 1
Nicosia 1035, Cyprus



Tel.

Tel: +357 22 030 030
Fax: +357 22 030 031



Email.

E: info@intelligentsignage.cy